



Hope for the future.



Company Outline

Foundation

2009



Employees

1,926
persons



Capital

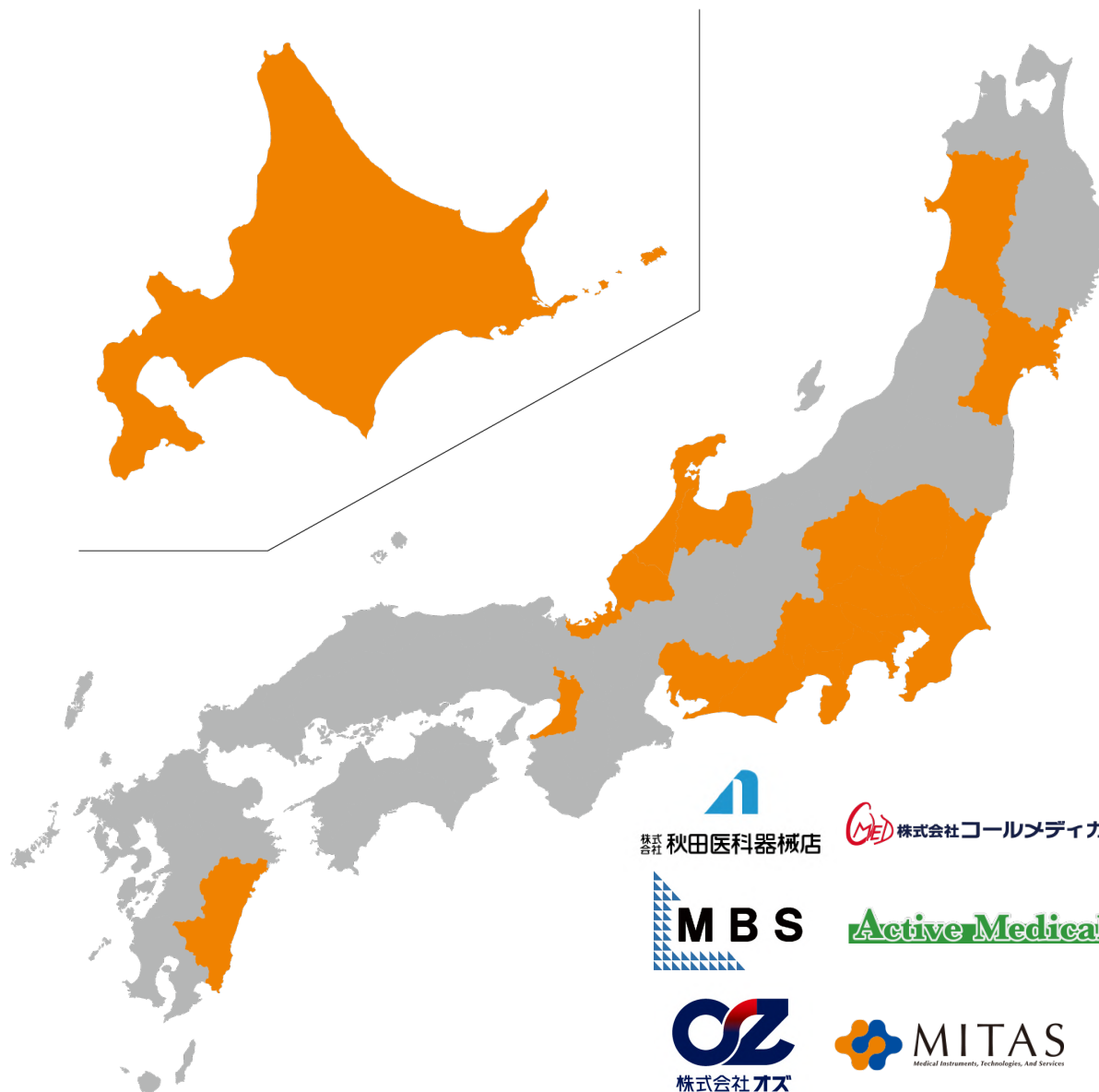
12.85
billion yen



Subsidiaries

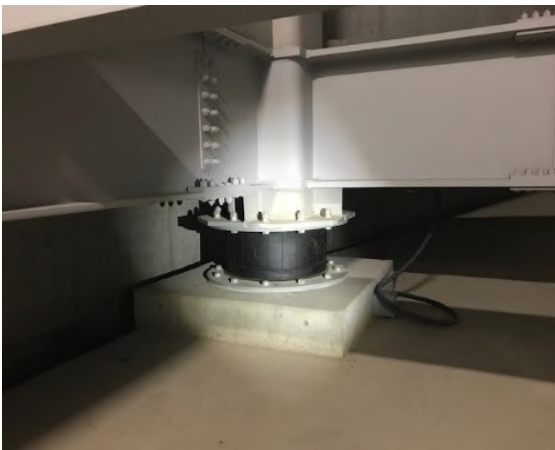
12
companies





| As A Leading Company

We believe that we can greatly improve medical settings throughout Japan by reliably supplying what's needed to create a high-quality, cost-effective medical environment.



Cutting-edge Medical Devices



Diagnostic Imaging Devices, Ophthalmological Devices, Various Clinical Testing Equipment, Endoscopes, Cardiovascular Equipment, etc.

Others



Disposable supplies, Testing equipment, Hospital equipment, Surgical equipment, etc.

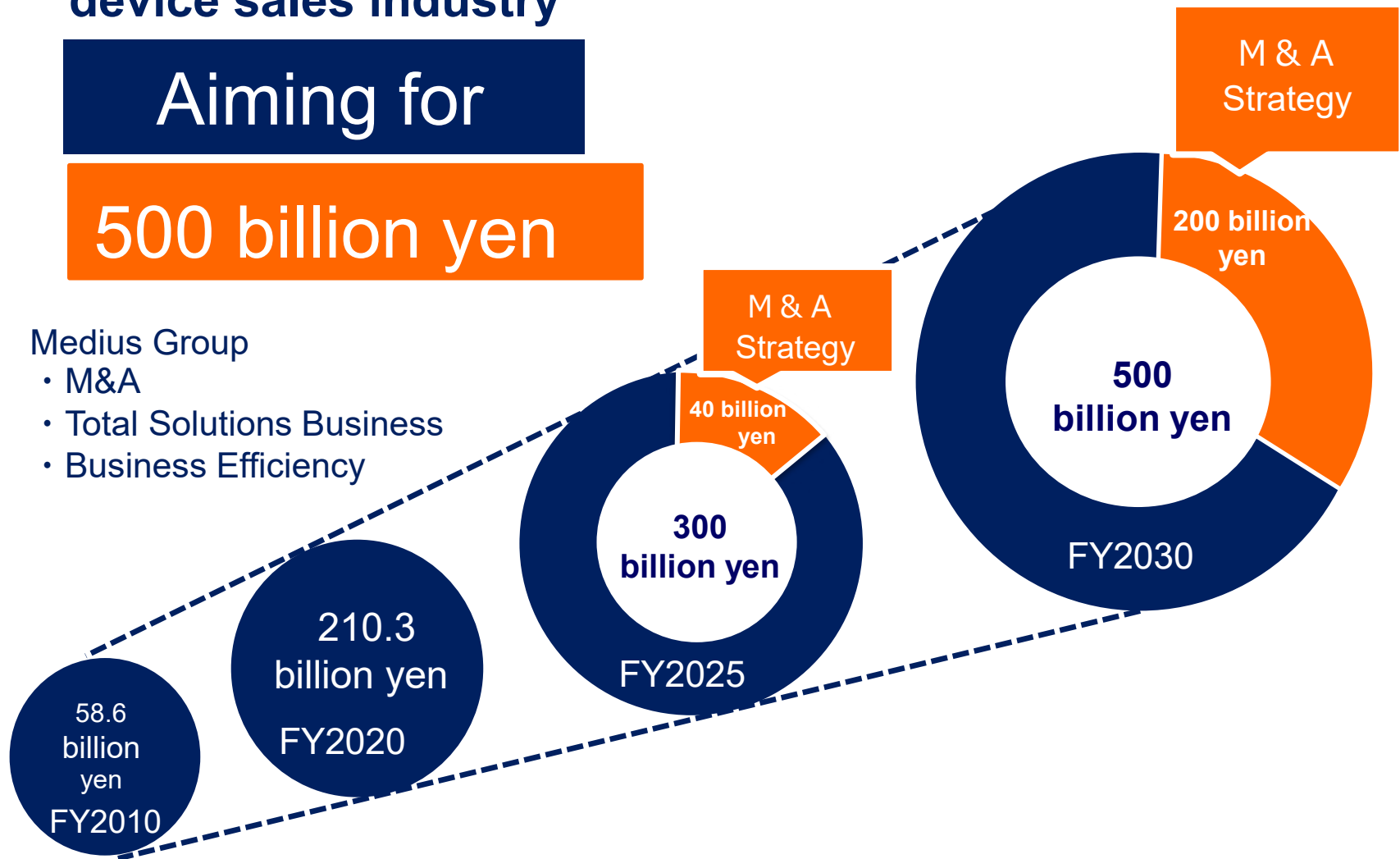
Emergence as the hands-down leader in the medical device sales industry

Aiming for

500 billion yen

Medius Group

- M&A
- Total Solutions Business
- Business Efficiency





THANK YOU!