A silhouette of a man lifting a child in a field at sunset. The man is standing in a field of tall grass, holding the child high above his head. The child is wearing blue boots. The background is a bright sunset sky with a low horizon line. The scene is captured in a warm, golden light.

For people.
For life.
For trust.



Company Outline

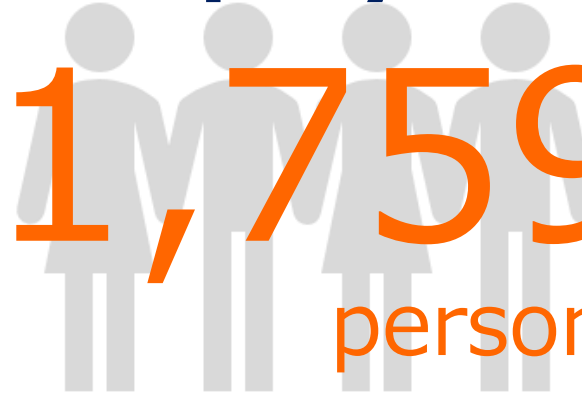
Foundation

2009



Employees

1,759
persons



Capital

12.85
billion yen



Subsidiaries

11
companies





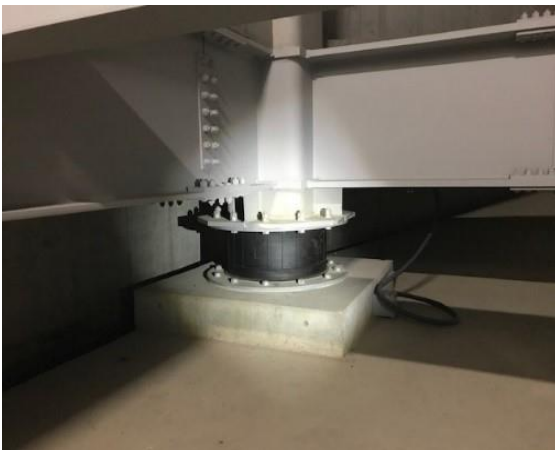
Group's bases

60



| As A Leading Company

We believe that we can greatly improve medical settings throughout Japan by reliably supplying what's needed to create a high-quality, cost-effective medical environment.



Cutting-edge Medical Devices



Diagnostic Imaging Devices, Ophthalmological Devices, Various Clinical Testing Equipment, Endoscopes, Cardiovascular Equipment, etc.

Others



Disposable supplies, Testing equipment, Hospital equipment, Surgical equipment, etc.

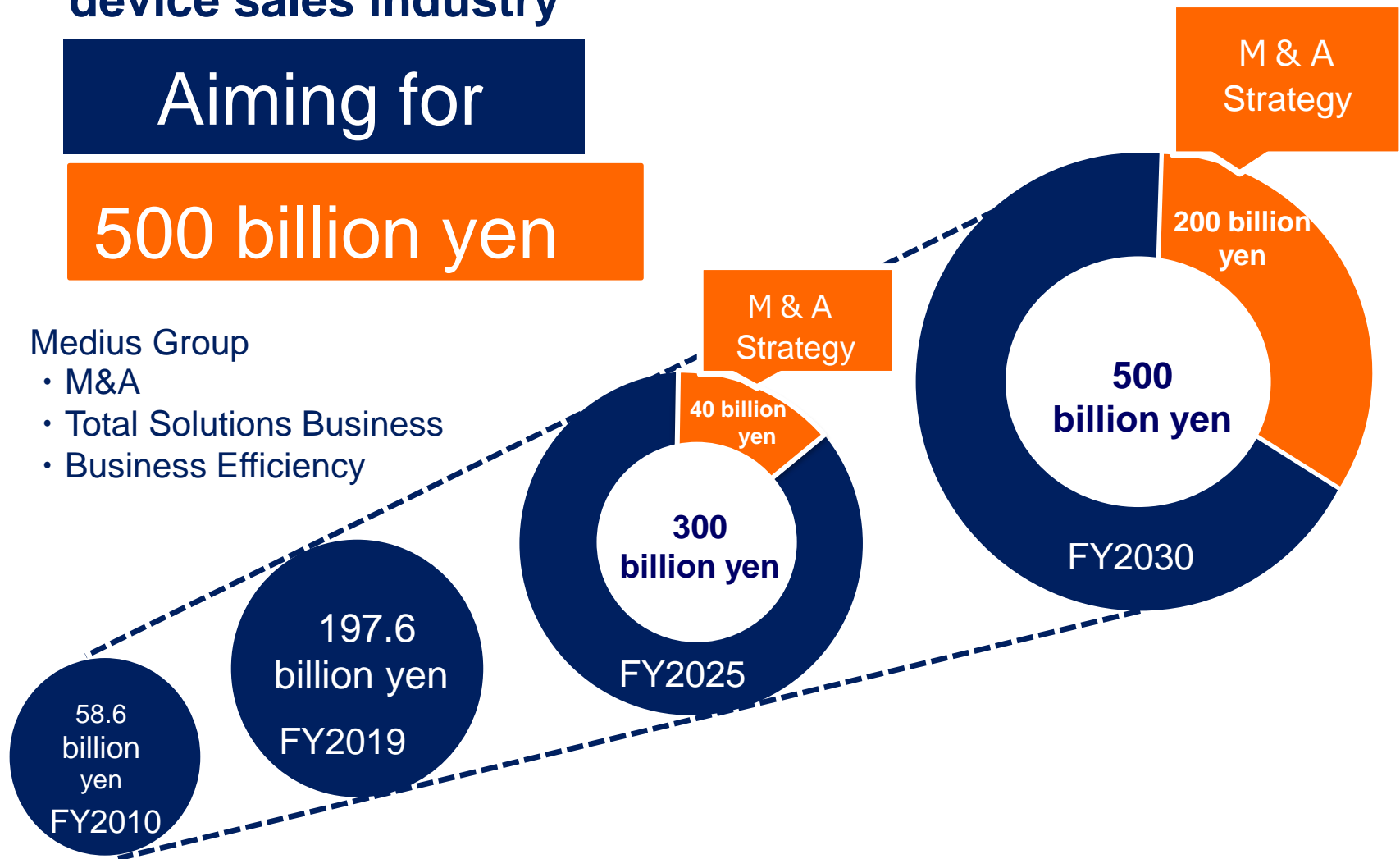
Emergence as the hands-down leader in the medical device sales industry

Aiming for

500 billion yen

Medius Group

- M&A
- Total Solutions Business
- Business Efficiency





THANK YOU!